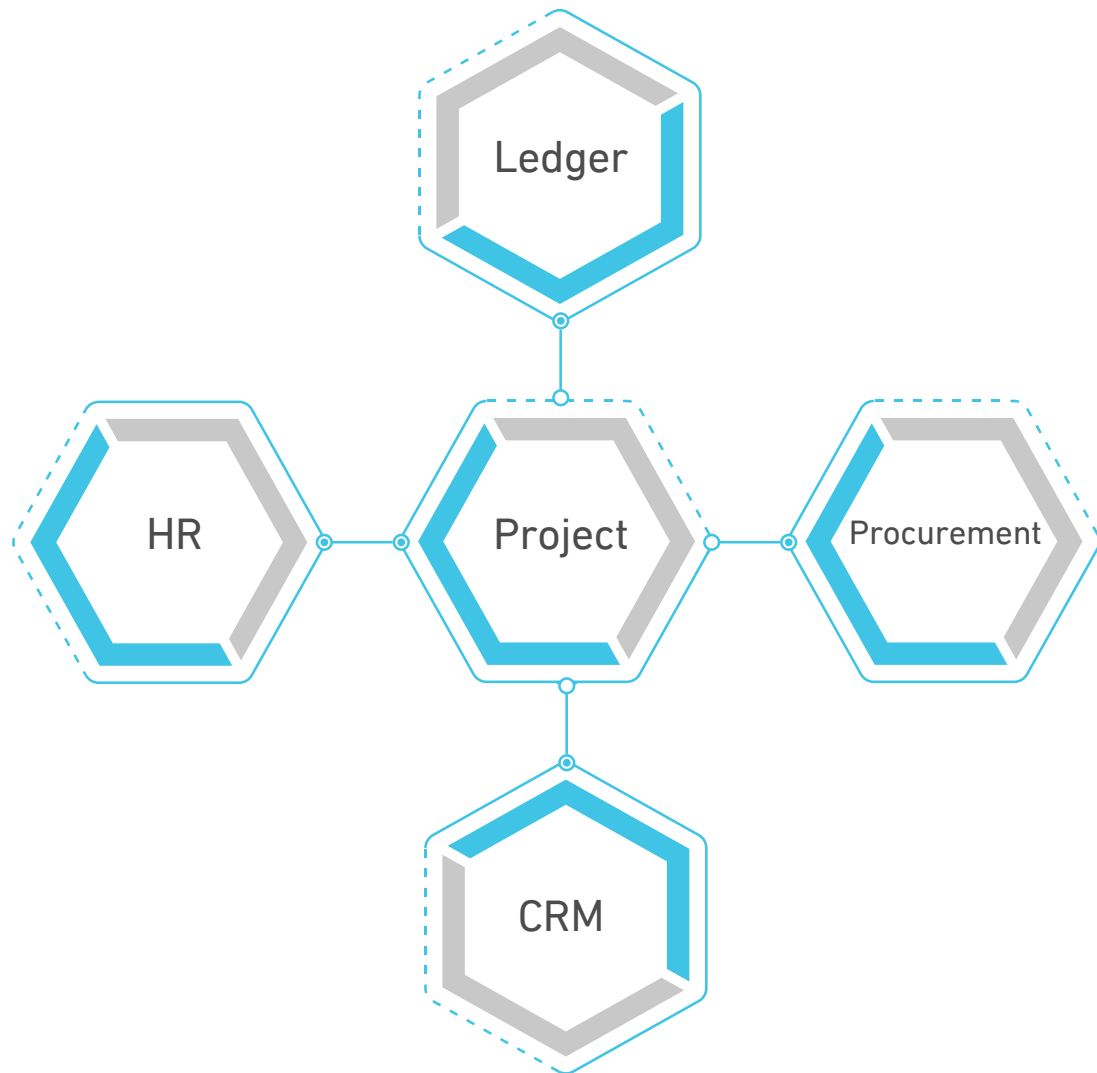


*Triosuite*

Projects and portfolio  
**Technology**



# Project Management Module Integration

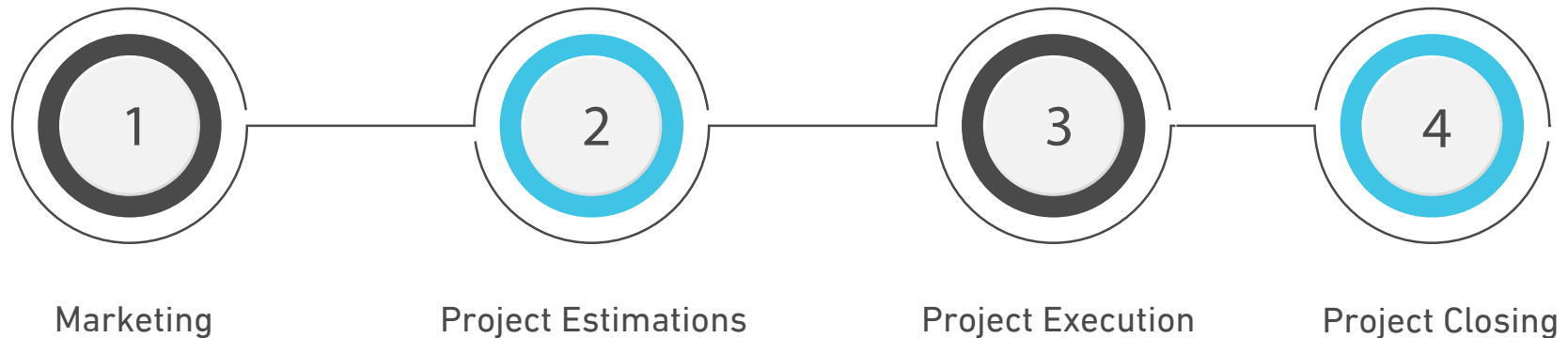


## Project Module

is fully integrated with other business units like Human resource and payroll, Procurement process, Marketing and the Financial series.



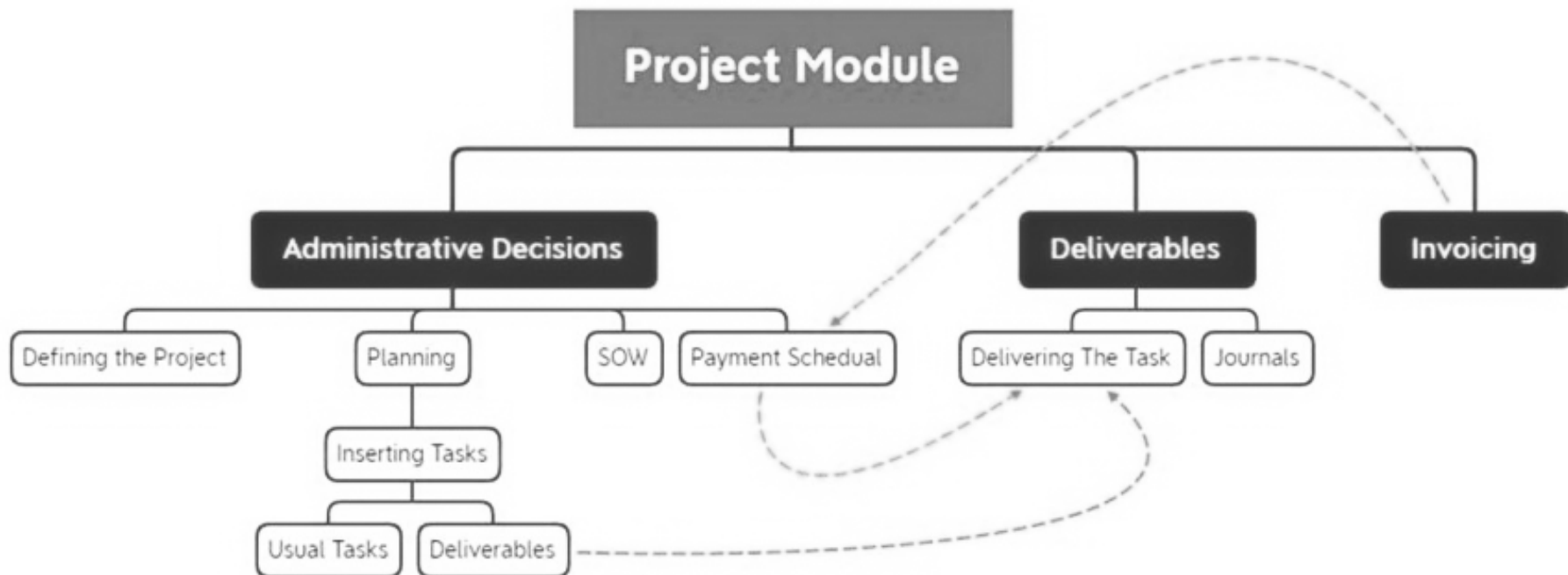
## Project Management Process



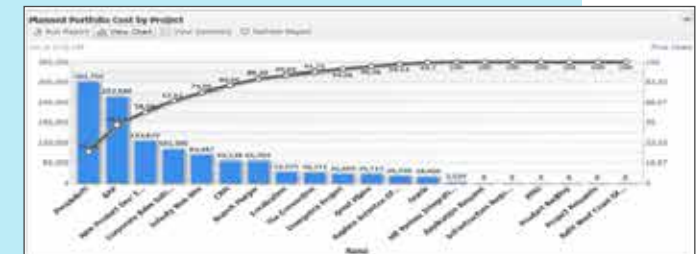
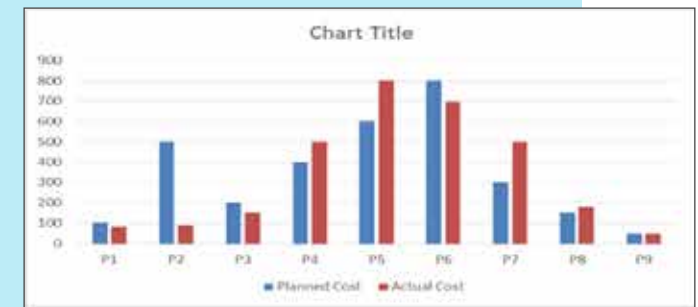
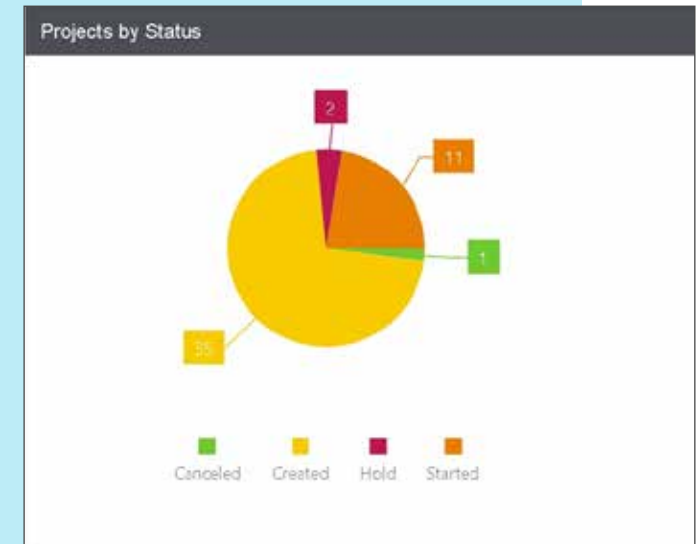
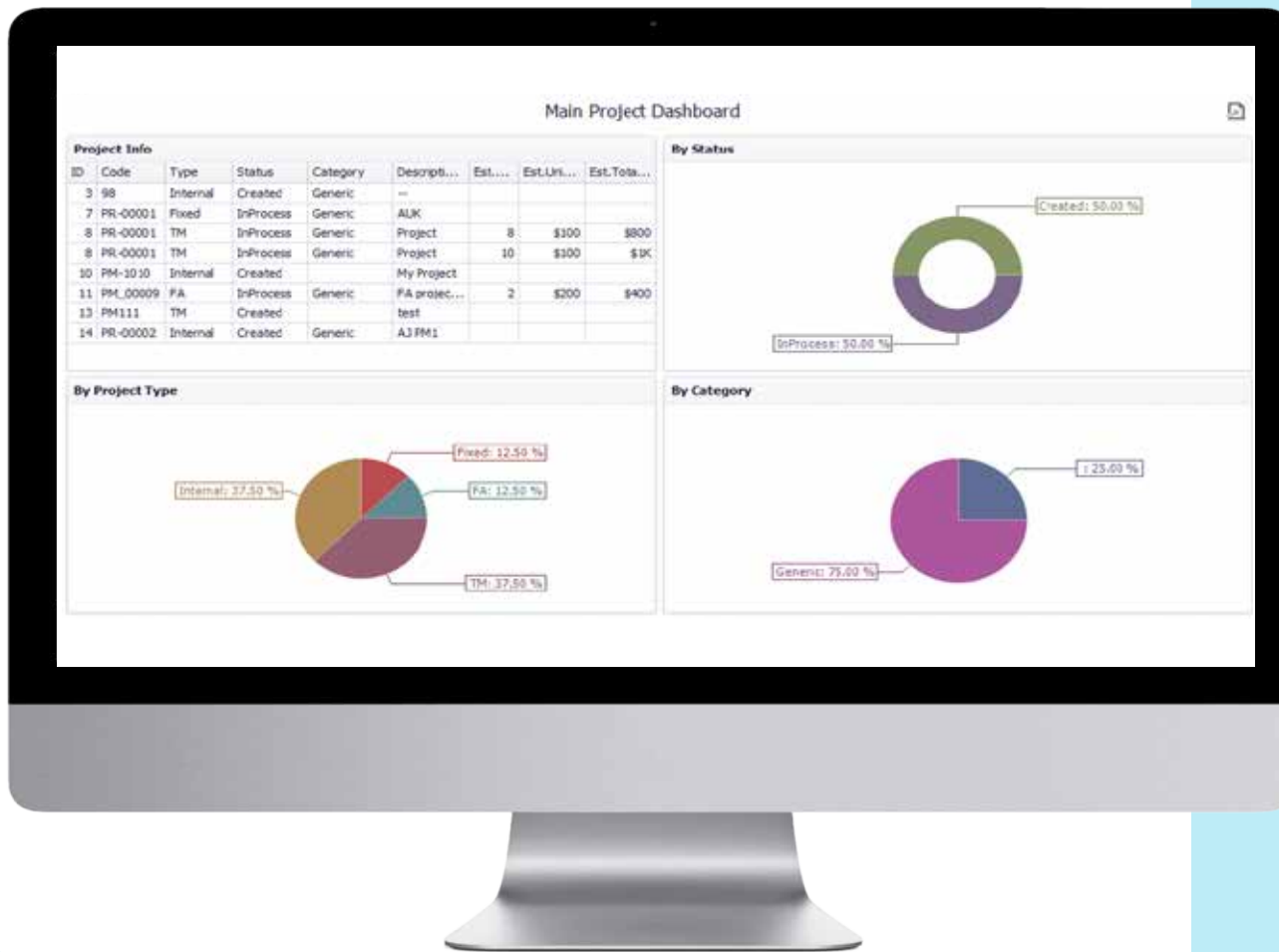
**A Project** is a series of tasks that need to be completed in order to reach a specific outcome. A project can also be defined as a set of inputs and outputs required to achieve a particular goal. Projects can range from simple to complex and can be managed by one person or a hundreds. In this screen project 's details are added

## Project Estimating

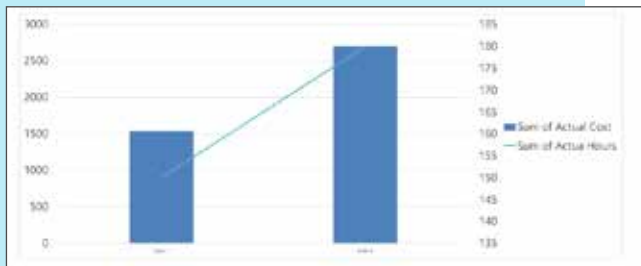
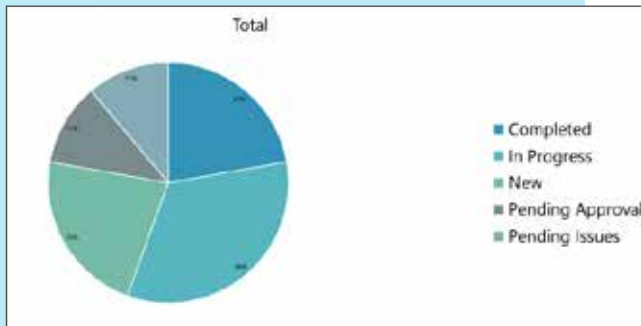
duration is a critical part of project planning, involving a quantitative estimate of project costs, resources or . Project estimation will be fetched automatically from the BOQ estimation and it can be modified again within high authority.



# Projects and portfolio Management



# Projects and portfolio Management



User	Project	Total Estimated Hours	Total Actual Hours
User 1	P1	15	12
User 1	P2	16	13
User 1	P3	17	14
User 1	P4	18	15
User 2	P5	19	16
User 2	P6	20	17
User 2	P7	21	18
User 3	P8	22	19
User 3	P9	23	20

Data		
User	Sum of Total Estimated Hours	Sum of Total Actual Hours
User 1	66	54
User 2	60	51
User 3	45	39
Grand Total	171	144

